



India Meteorological Department  
(Ministry of Earth Sciences)

NATIONAL BULLETIN NO. 13 (LAND/01/2024)

TIME OF ISSUE: 0800 HOURS IST

DATED:05.08.2024

FROM: INDIA METEOROLOGICAL DEPARTMENT (FAX NO. 24643965/24699216/24623220)

TO: CONTROL ROOM, NDM, MINISTRY OF HOME AFFAIRS (FAX.NO. 23093750)

CONTROL ROOM NDMA (FAX.NO. 26701729)

CABINET SECRETARIAT (FAX.NO.23012284, 23018638)

PS TO HON'BLE MINISTER FOR S & T AND EARTH SCIENCES (FAX NO.23316745)

SECRETARY, MOES (FAX NO. 24629777)

H.Q. (INTEGRATED DEFENCE STAFF AND CDS) (FAX NO. 23005137/23005147)

DIRECTOR GENERAL, DOORDARSHAN (23385843)

DIRECTOR GENERAL, AIR (23421105, 23421219)

PIB MOES (FAX NO. 23389042)

UNI (FAX NO. 23355841)

D.G. NATIONAL DISASTER RESPONSE FORCE (NDRF) (FAX NO. 26105912, 2436 3260)

DIRECTOR, PUNCTUALITY, INDIAN RAILWAYS (FAX NO. 23388503)

CHIEF SECRETARY, WEST BENGAL (FAX NO. 033-22144328)

CHIEF SECRETARY, JHARKHAND (FAX NO. 0651-2400255)

CHIEF SECRETARY, CHHATTISGARH (FAX NO. 0771-2221206)

CHIEF SECRETARY, BIHAR (FAX NO. 0612-2217085)

CHIEF SECRETARY, MADHYA PRADESH (FAX NO. 0755-2441076)

CHIEF SECRETARY, UTTAR PRADESH (FAX NO.0522-2239283)

CHIEF SECRETARY, RAJASHTHAN (FAX NO. 0141-2227114)

CHIEF SECRETARY, GUJARAT (FAX NO. 079-23250305)

**Sub: Deep Depression weakened into a depression over Northeast Rajasthan and adjoining Northwest Madhya Pradesh**

The deep depression over northwest Madhya Pradesh and adjoining Northeast Rajasthan moved west-northwestwards with a speed of 23 kmph during past 6 hours, weakened into a depression and lay centered at 0530 hours IST of 5<sup>th</sup> August over Northeast Rajasthan and adjoining Northwest Madhya Pradesh near latitude 26.3°N and longitude 76.2°E, about 180 km northwest of Shivpuri (Madhya Pradesh), 40 km north-northwest of Sawai Madhopur (Rajasthan) and 70 km southeast of Jaipur (Rajasthan).

It is likely to move west-northwestwards across northeast Rajasthan and weaken further into a well marked low pressure area during next 24 hours.

**Warnings (Graphics Attached):**

**(i) Rainfall Warning:**

**East Madhya Pradesh:**

Light to moderate rainfall at most places with **heavy rainfall** at isolated places is very likely on 5<sup>th</sup> August.

**West Madhya Pradesh:**

Light to moderate rainfall at most places with **heavy rainfall** at isolated places is very likely on 05<sup>th</sup> & 6<sup>th</sup> August.

**West Uttar Pradesh:**

Light to moderate rainfall at many places with **heavy rainfall** at isolated places is very likely over West Uttar Pradesh on 5<sup>th</sup> August.

**East Rajasthan:**

Light to moderate rainfall at most places with isolated **heavy rainfall** isolated places is very likely on 5<sup>th</sup> August.

**West Rajasthan:**

Light to moderate rainfall at most places with **heavy to very heavy rainfall** at isolated places is very likely on 5<sup>th</sup> & 6<sup>th</sup> August.

**Gujarat region:**

Light to moderate rainfall at most places is very likely with **heavy to very heavy rainfall** at a few places on 5<sup>th</sup> and **heavy rainfall** at isolated places on 6<sup>th</sup> August.

**Saurashtra & Kutch:**

Light to moderate rainfall at many places is very likely on 5<sup>th</sup> August.

**Madhya Maharashtra:**

Light to moderate rainfall at most places is very likely with **heavy rainfall** at a few places on 5<sup>th</sup> & 6<sup>th</sup> August; **very heavy rainfall** at isolated places also likely on 5<sup>th</sup> August.

**Konkan & Goa:**

Light to moderate rainfall at most places with **heavy rainfall** at a few places is very likely on 5<sup>th</sup> & 6<sup>th</sup> August.

**(ii) Flash Flood Guidance (Graphics Attached):**

Low to Moderate flash flood risk likely over few watersheds & neighbourhoods of East Rajasthan and West Rajasthan Met Sub-divisions during next 24 hours.

Surface runoff/ Inundation may occur at some fully saturated soils & low-lying areas over Area of Concern (AoC) as shown in map due to expected rainfall occurrence in next 24 hours.

Low to Moderate flash flood risk likely over few watersheds & neighbourhoods of Gujarat Region and Konkan & Goa Met Sub-divisions during next 24 hours.

Surface runoff/ Inundation may occur at some fully saturated soils & low-lying areas over AoC as shown in map due to expected rainfall occurrence in next 24 hours.

**(iii) Wind warning:**

- Strong wind speed reaching 30-40 kmph gusting to 50 kmph is very likely over Rajasthan and adjoining West Madhya Pradesh on 5<sup>th</sup> August.

**(iv) Impact Expected**

- Localized Flooding of roads, water logging in low lying areas and closure of underpasses mainly in urban areas of the above region.
- Occasional reduction in visibility due to heavy rainfall.
- Disruption of traffic in major cities due to water logging in roads leading to increased travel time.
- Surface runoff/ inundation may occur at some fully saturated soils & low-lying areas
- Minor damage to kutchha roads.
- Possibilities of damage to vulnerable structure.
- Localized Landslides/Mudslides/landslips/mud slips/land sinks/mud sinks.

- Damage to horticulture and standing crops in some areas due to inundation.
- It may lead to riverine flooding in some river catchments (for riverine flooding please visit Web page of CWC)

**(v) Action Suggested**

- Check for traffic congestion on your route before leaving for your destination.
- Follow any traffic advisories that are issued in this regard.
- Avoid going to areas that face the water logging problems often.
- Avoid staying in vulnerable structure.

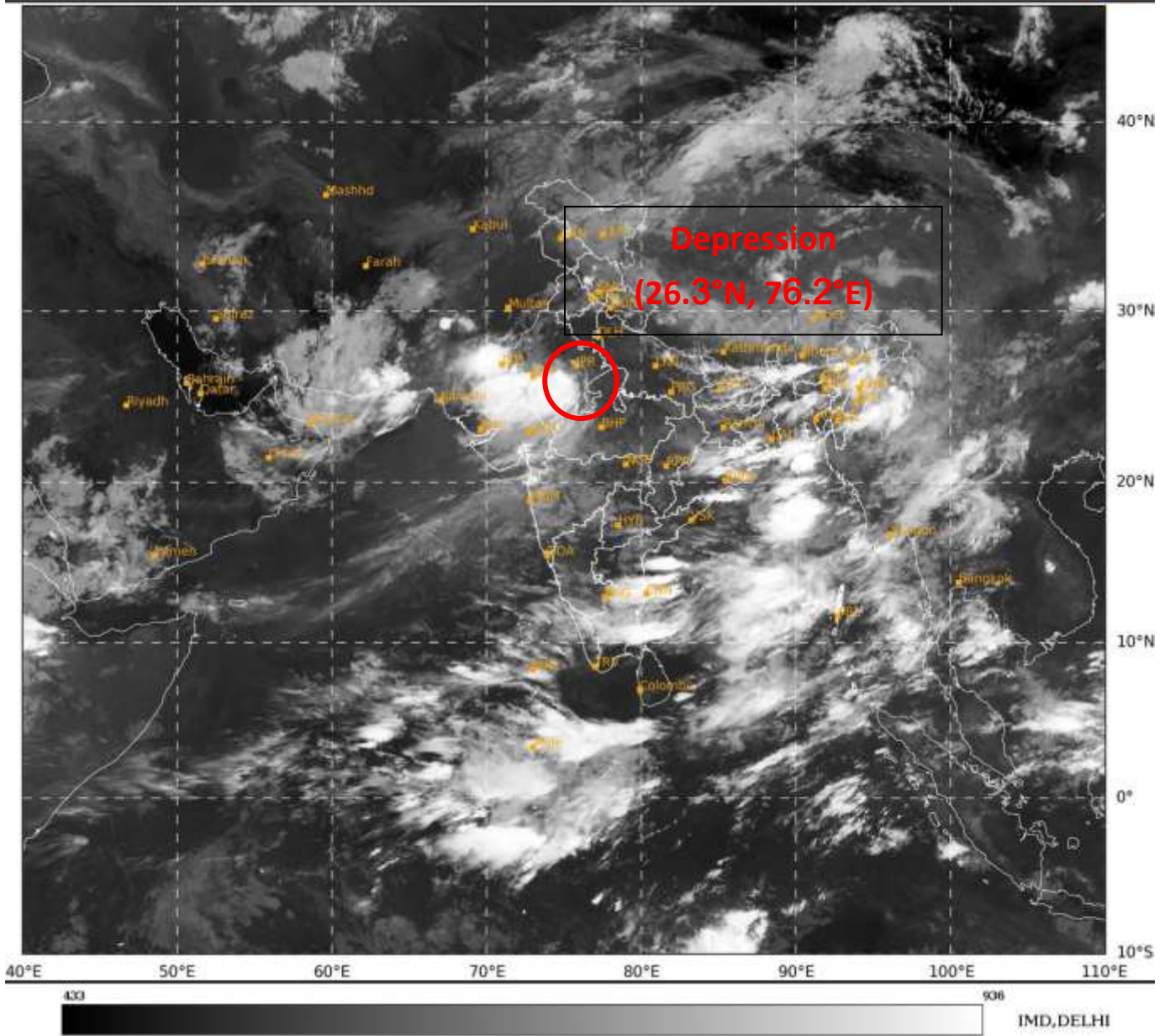
**(vi) Agromet advisories for Heavy Rainfall likely over various parts of the country**

- Make provision for draining out excess water from crop fields to avoid water stagnation in West Bengal, Sub Himalayan West Bengal, Odisha, Jharkhand, Bihar, Rajasthan, Madhya Pradesh, Chhattisgarh.
- Provide mechanical support to horticultural crops and staking to vegetables.

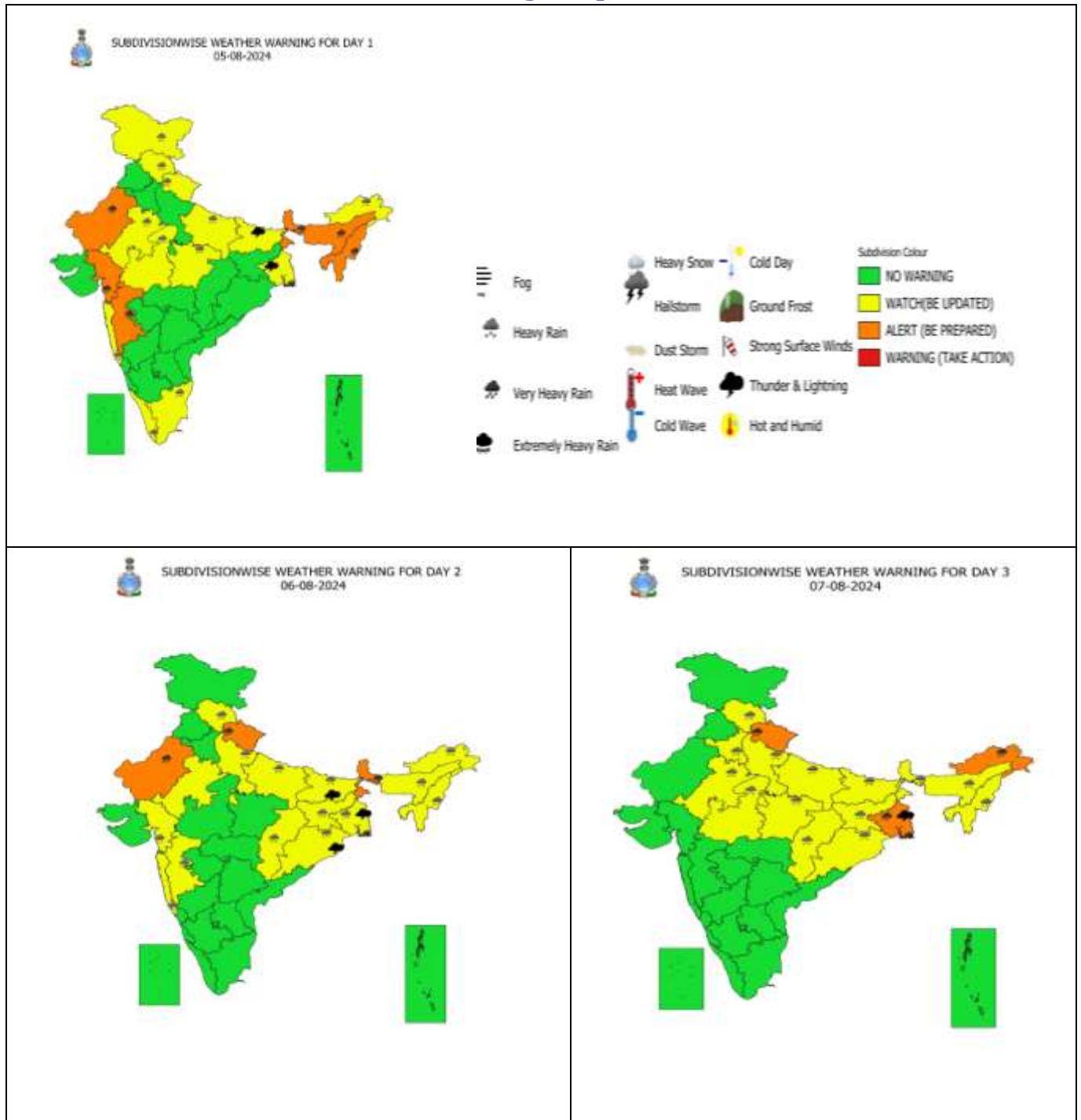
**Next bulletin will be issued at 1130 hours IST of today, the 5<sup>th</sup> August, 2024.**

**(Dr. Shashi Kant)  
Scientist-D, Cyclone Warning Division, New Delhi**

*Copy to: ACWC Kolkata/RMC, New Delhi/RMC, Nagpur/MC, Ranch/MC, Raipur/MC, Patna/MC, Bhopal/MC, Jaipur/CWC Bhubaneswar/MC, Lucknow/RMC, Mumbai/MC, Ahmedabad*



## Warning Graphics



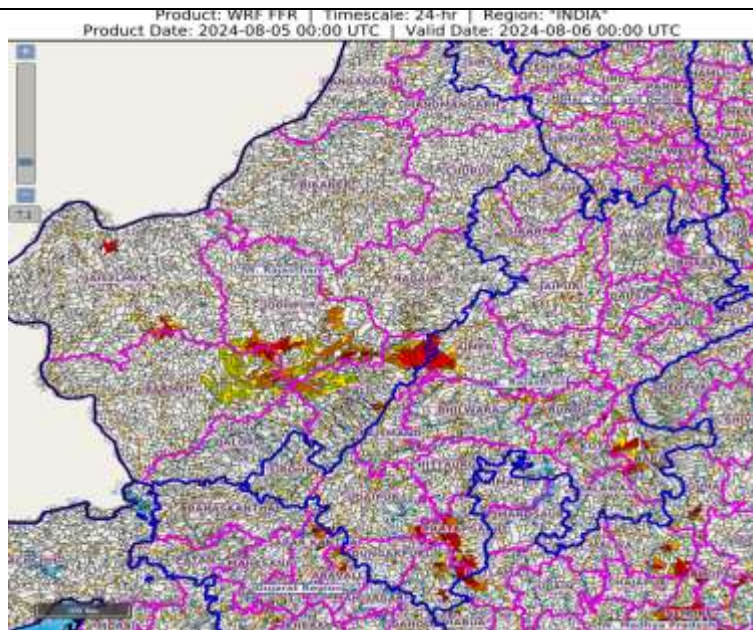
- Action may be taken based on **ORANGE AND RED COLOUR** warnings.
- Vulnerable regions likely urban and hilly areas action may be initiated for heavy rainfall warning.
- As the lead period increases forecast accuracy decreases.

## Flash Flood Guidance

### **24 hours Outlook for the Flash Flood Risk (FFR) till 0530 IST of 06-08-2024 :**

**Low to Moderate flash flood risk** likely over few watersheds & neighbourhoods of **East Rajasthan** and **West Rajasthan** Met Sub-divisions during next 24 hours.

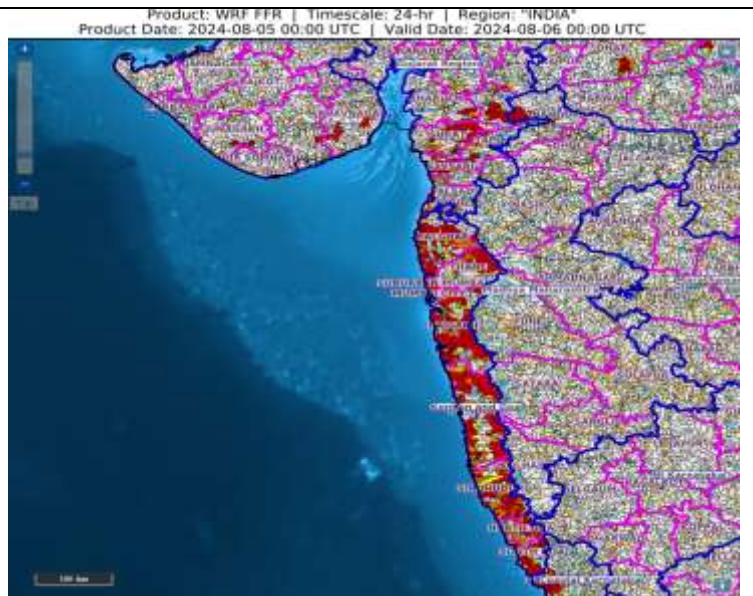
Surface runoff/ Inundation may occur at some fully saturated soils & low-lying areas over AoC as shown in map due to expected rainfall occurrence in next 24 hours.



### **24 hours Outlook for the Flash Flood Risk (FFR) till 0530 IST of 06-08-2024 :**

**Low to Moderate flash flood risk** likely over few watersheds & neighbourhoods of **Gujarat Region** and **Konkan & Goa** Met Sub-divisions during next 24 hours.

Surface runoff/ Inundation may occur at some fully saturated soils & low-lying areas over AoC as shown in map due to expected rainfall occurrence in next 24 hours.



### **Flash Flood Risk**

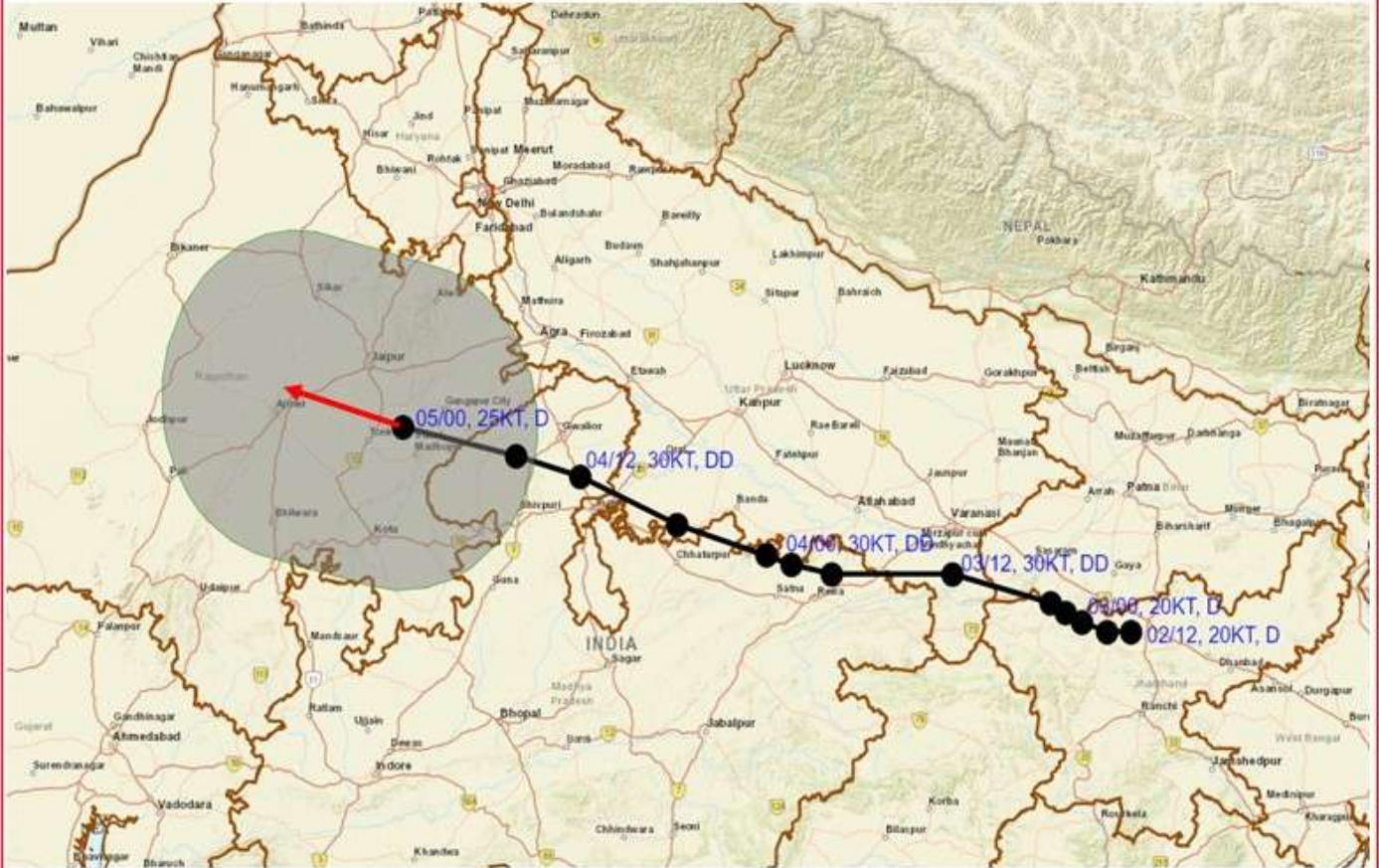
**High Risk (Take Action)**

**Moderate Risk (Be Prepared)**

**Low Risk (Be Updated)**



**OBSERVED AND FORECAST TRACK ALONGWITH WIND DISTRIBUTION IN ASSOCIATION WITH DEPRESSION OVER NORTHEAST RAJASTHAN AND ADJOINING NORTHWEST MADHYA PRADESH BASED ON 0530 IST (0000 UTC) OF 05th AUGUST, 2024.**



DATE/TIME IN UTC  
 IST=UTC + 0530  
 L: LOW PRESSURE AREA  
 WML: WELL MARKED LOW PRESSURE AREA  
 D: DEPRESSION (17-27 KT)  
 DD: DEEP DEPRESSION (28-33 KT)  
 CS: CYCLONIC STORM (34-47 KT)  
 SCS: SEVERE CYCLONIC STORM (48-63KT)  
 VSCS: VERY SEVERE CYCLONIC STORM (64-89 KT)  
 ESCS: EXTREMELY SEVERE CYCLONIC STORM (90-119 KT)  
 SuCS: SUPER CYCLONIC STORM (≥ 120 KT)

- LESS THAN 34 KT
- 34-47 KT
- ≥ 48 KT
- OBSERVED TRACK
- FORECAST TRACK
- ▲ CONE OF UNCERTAINTY
- AREA OF MAXIMUM SUSTAINED WIND SPEED:  
 30-40 KMPH GUSTING TO 50 KMPH